

(K) 利用醣化蛋白質體學質譜技術進行標的抗原全面性鑑定

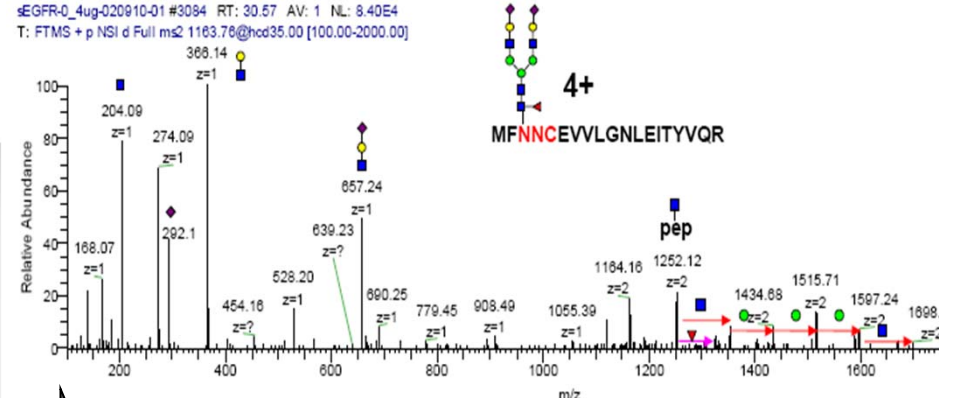
Antibodies targeting glycoproteins by affinity column +/- Deglycosylate

nanoLC-ESI/MS

On-line LC-MS/MS DDA +/- or target inclusion list



Glycopeptide analysis by HCD



In-house Database for Target Proteins Search

IgG Database
 XXXXXXXXXXXXXXXXXXXXXXXXXXXXXXXXKXXXXCXXXXXXXX
 XXXXXXXXXXXCXXXXXXXXKXXXXXXXXXXCXXXXX
 XXXXXXXXKXXXXXXXXXKXXXXXXXXXXXXXXXXXXXXX
 XXXXXXXCXXXXXXXXXXXXXXXXKXXXXXXXX

Target Proteins Sequencing +/- PTM Sites Mapping

